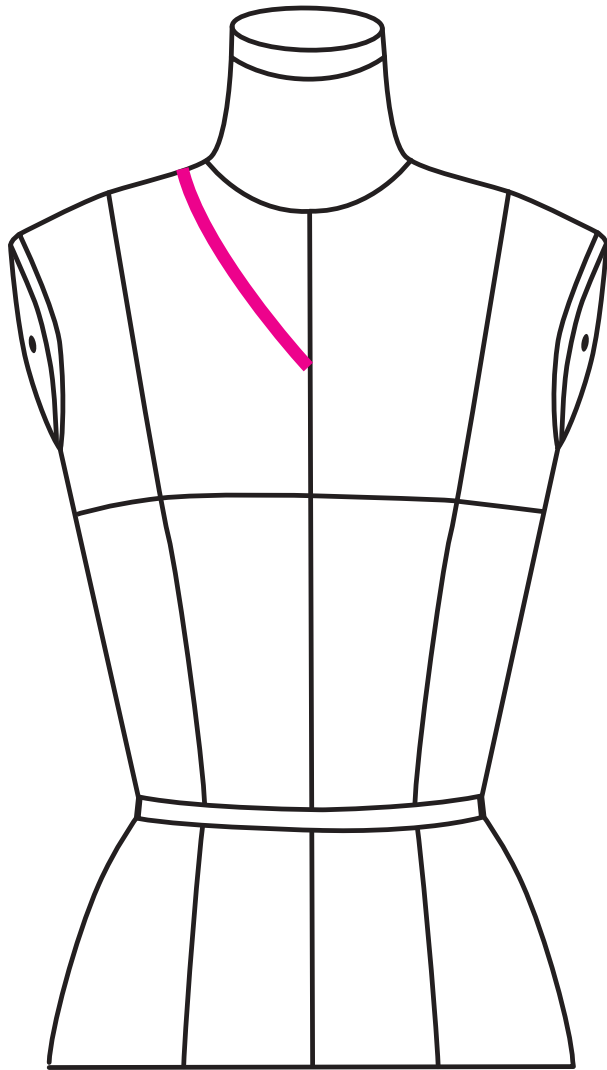


# Creative Standing Collar with Soft Pleats, Inspired by Alexander McQueen

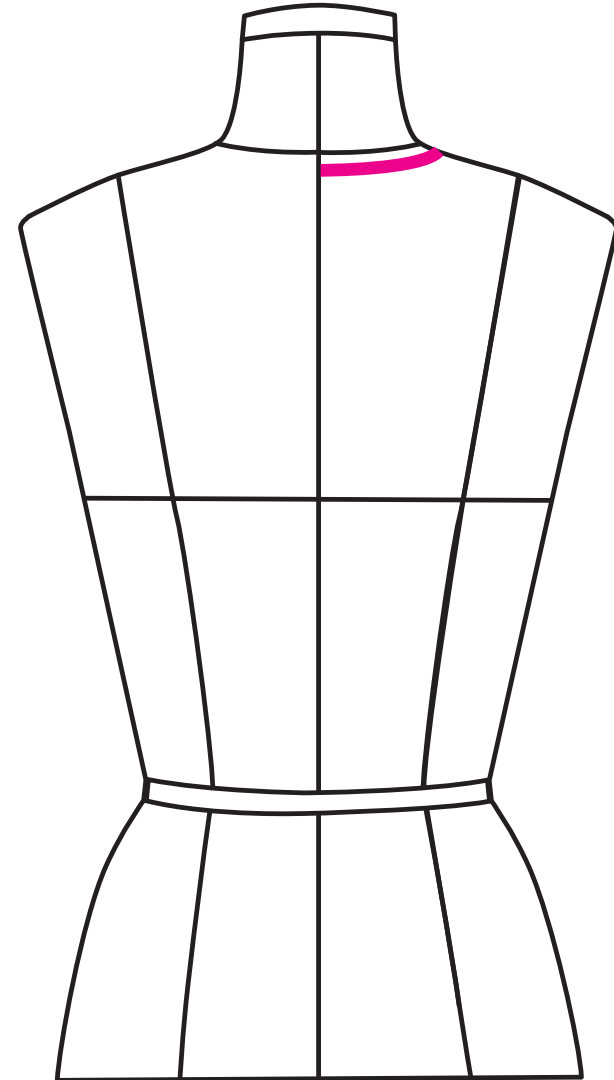


Temp. Assistant Professor Larissa Shirley King,  
Fashion Design, Fashion Institute of Technology



**Use your style tape to mark a narrow V-neckline, as shown.**

Measure the neckline from the CB to the shoulder seam \_\_\_ in

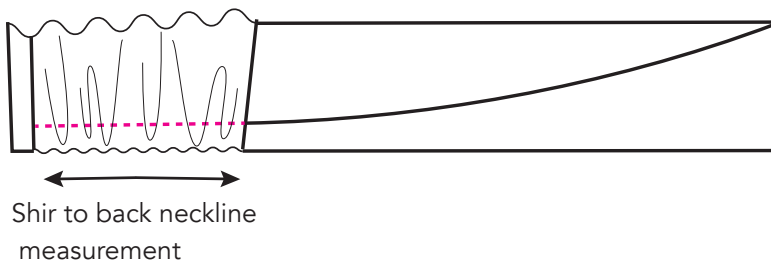
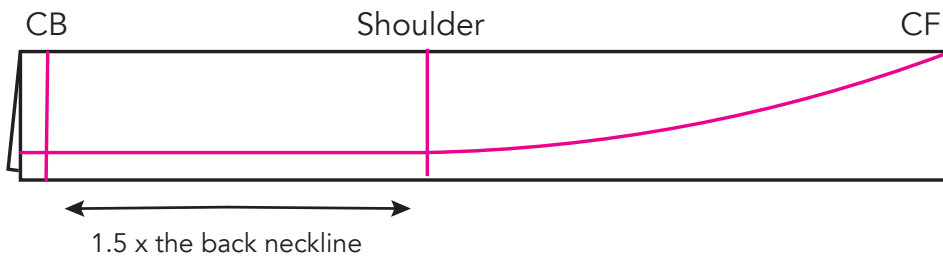
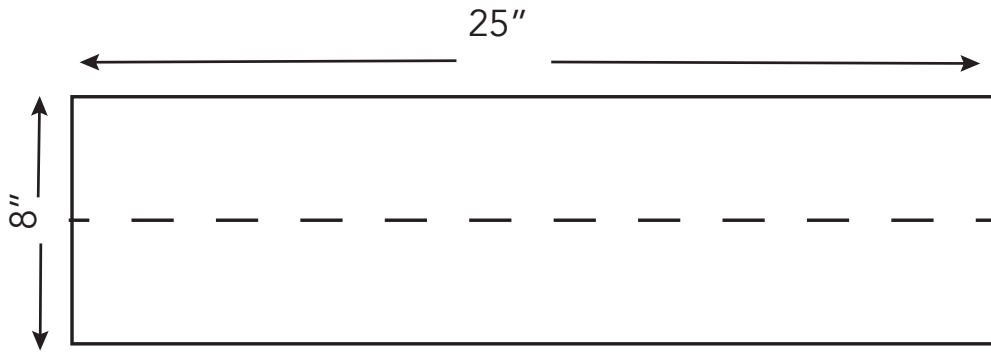


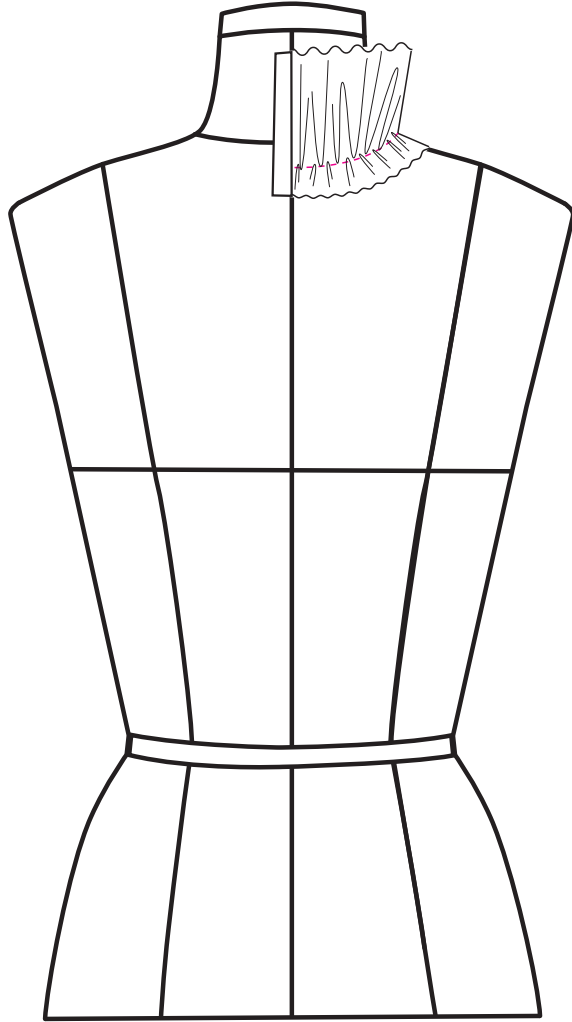
**Calculate for the drape:**

- Back neck seam \_\_\_ in x 1.5 = \_\_\_ in

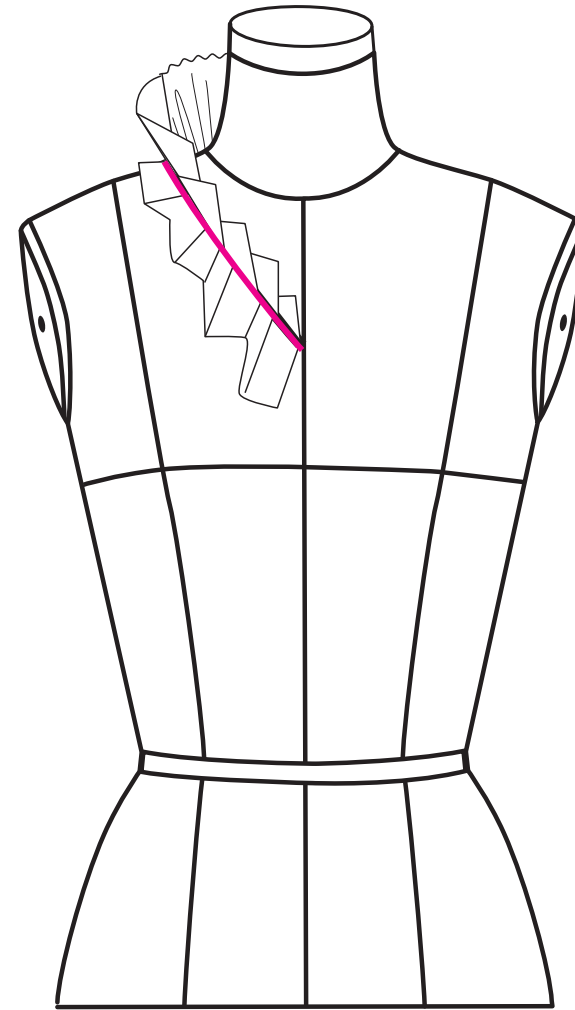
## Prepare the Drape

1. Prepare a piece of muslin, 25" wide by 8" tall.
2. Fold in half lengthwise and press.
3. Draft a vertical line 1" away from the left edge--this is the CB
4. Draft a second vertical line 1.5 times the CB and Shoulder Seam neckline distance
5. Draft a horizontal line 1" away from the bottom edge
6. Using your hip curve, connect the Shoulder Seam to the corner, to create a guideline
7. Machine or hand shirr the back neckline to the measurement of the back neckline





1. Pin the back collar to the back neckline, from the CB to the shoulder seam.  
 2. At the shoulder seam, start forming soft, irregular pleats, using the guideline as a general guide to the seamline along the front neckline. Adjust the pleats into



proportions you find appealing, finishing at the CF/corner of the drape.  
 3. Mark, and true the pleats, seamline and seam allowance. Transfer to paper to create your final pattern.