

Modified Gigot Sleeve, Inspired by Alexander McQueen

Modified Gigot Sleeve, Inspired by Alexander McQueen



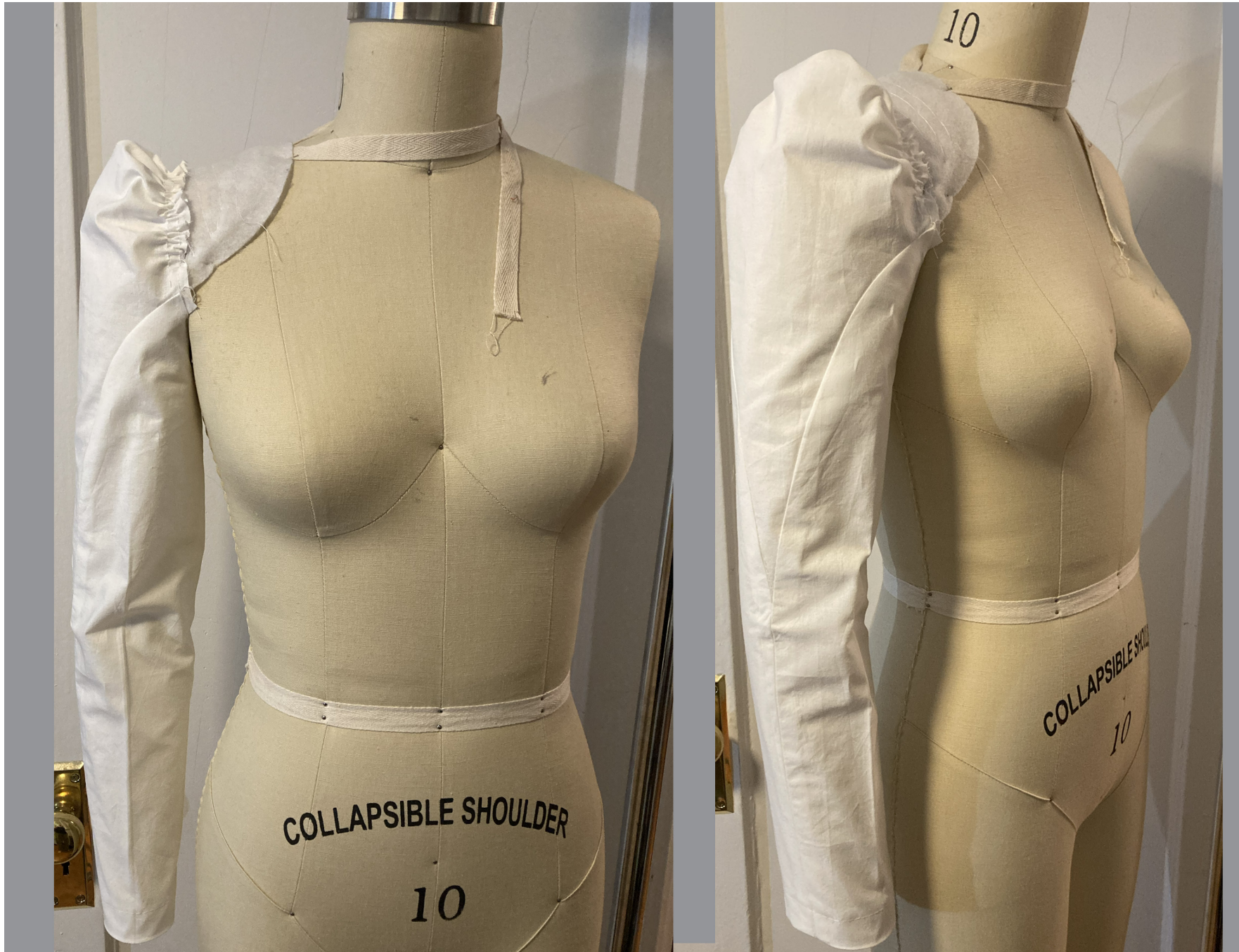
Adjunct Faculty Larissa Shirley King,
Fashion Design, Fashion Institute of Technology

Modified Gigot Sleeve, Inspired by Alexander McQueen

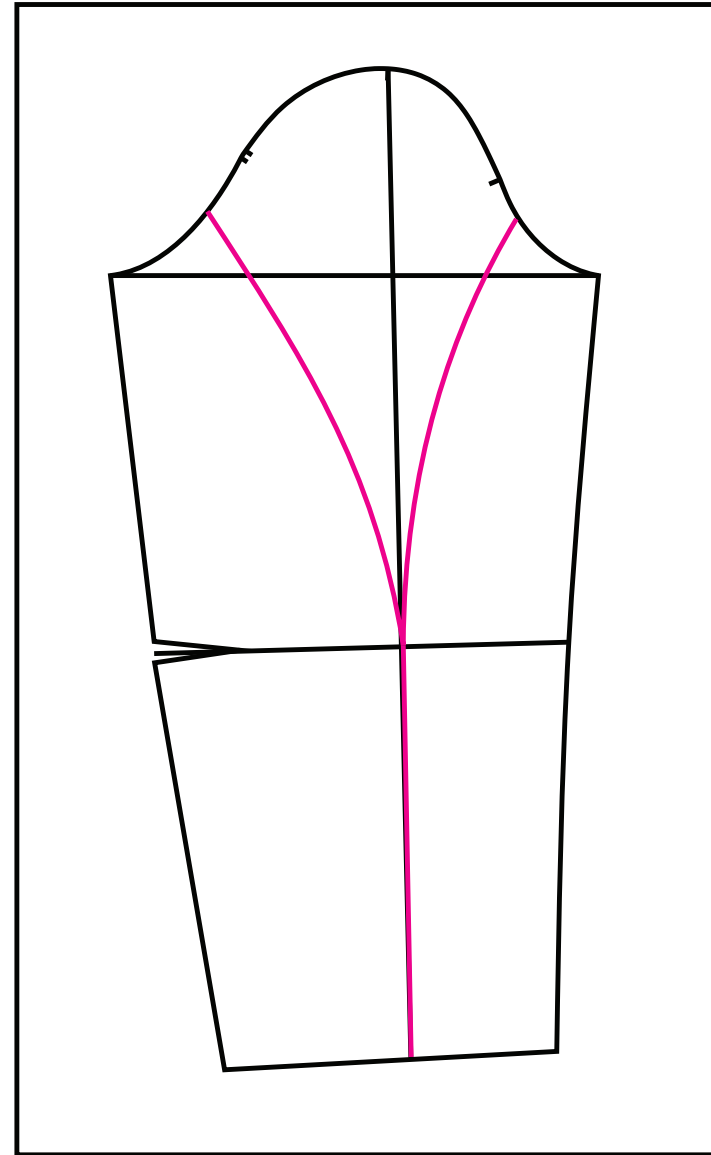
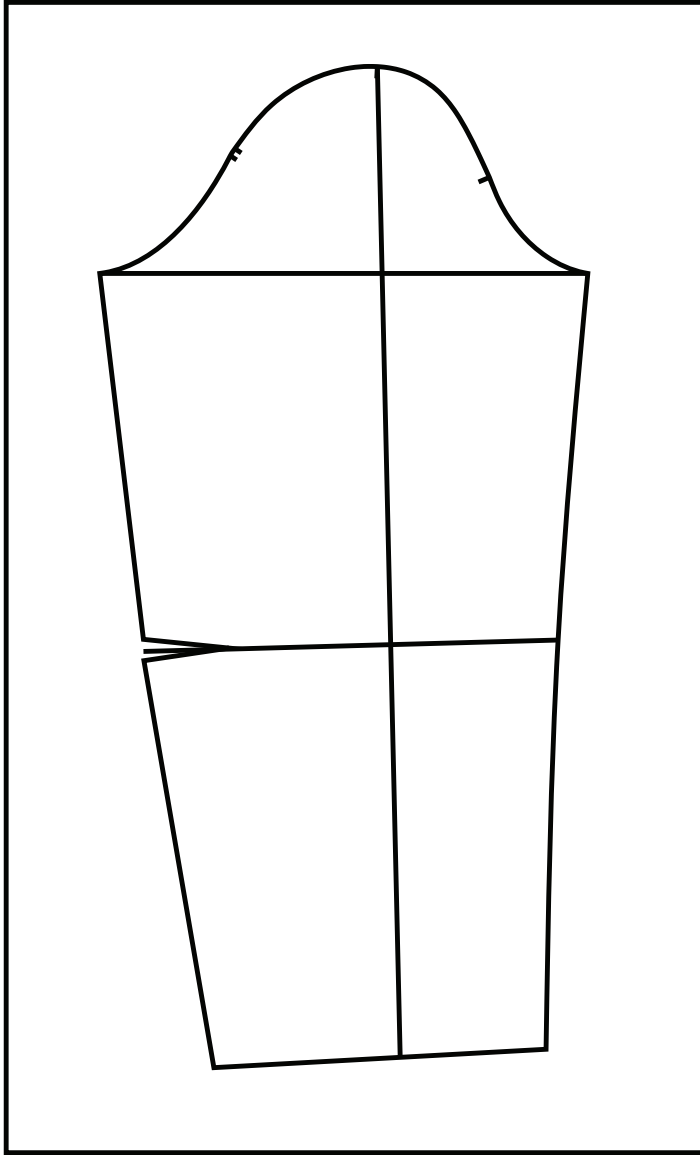


Adjunct Faculty Larissa Shirley King,
Fashion Design, Fashion Institute of Technology

Modified Gigot Sleeve, Inspired by Alexander McQueen

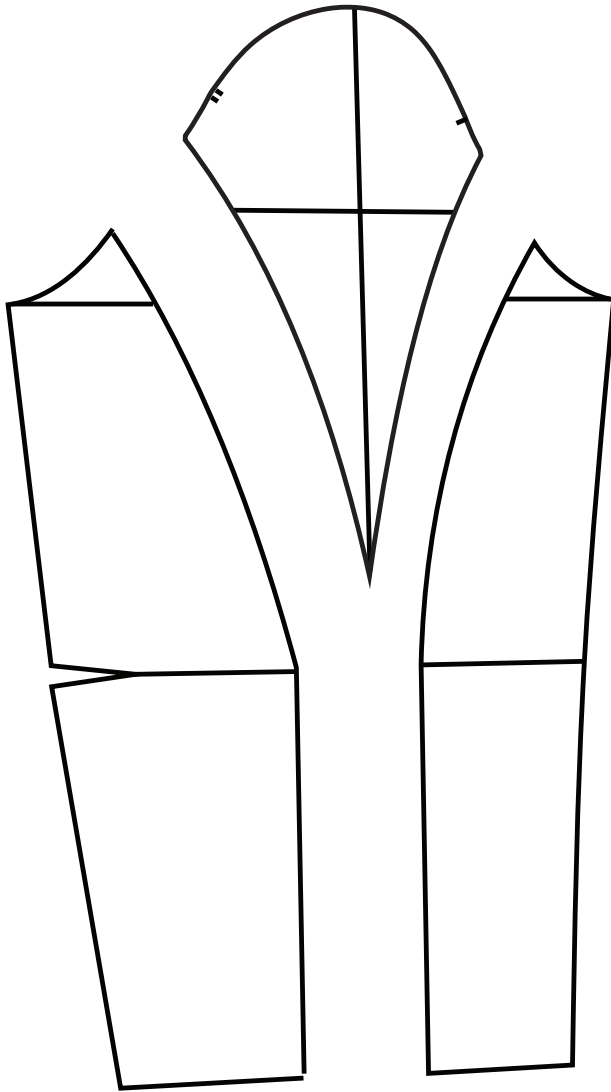


Adjunct Faculty Larissa Shirley King,
Fashion Design, Fashion Institute of Technology

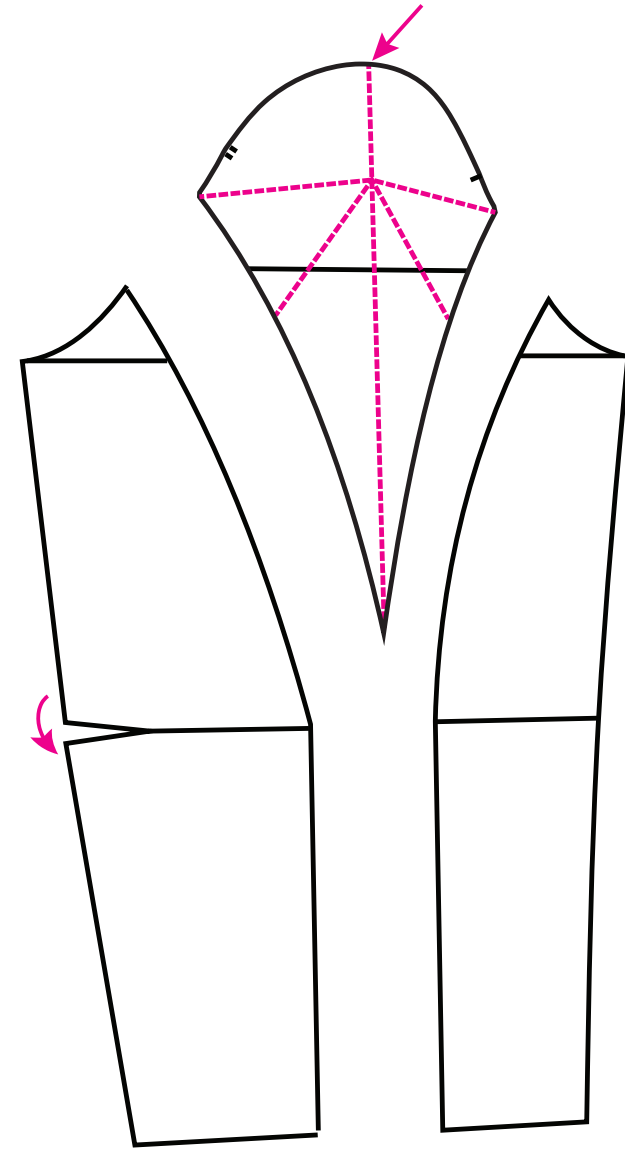


1. Trace off the darted jacket sleeve sloper.

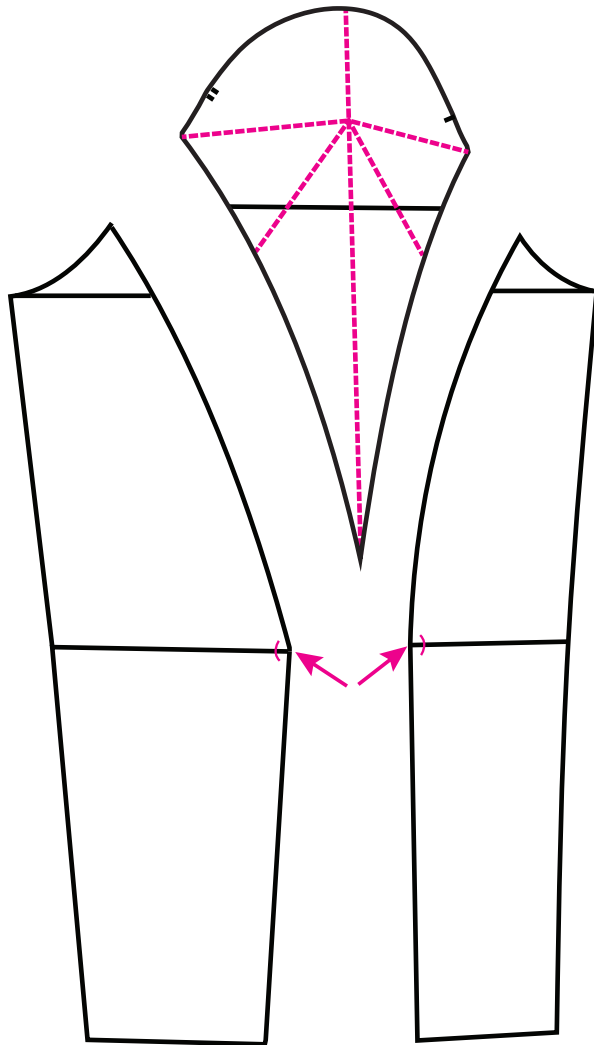
2. Using ruler and curves, draw in your desired style lines



3. Trace off or cut apart the initial pattern pieces at the style lines.
4. Close the elbow dart, on the back sleeve piece, transferring it to the center sleeve seam.

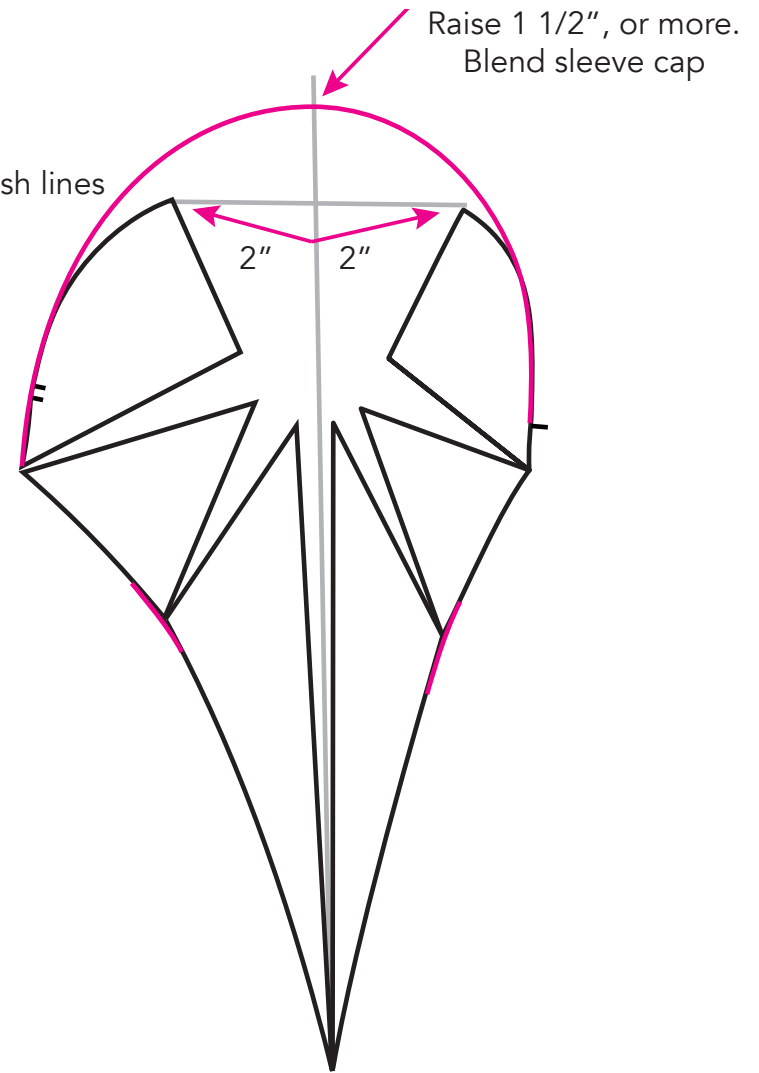


5. On the center sleeve, draw in slash lines as shown.
6. Slash from the top down along the slash lines

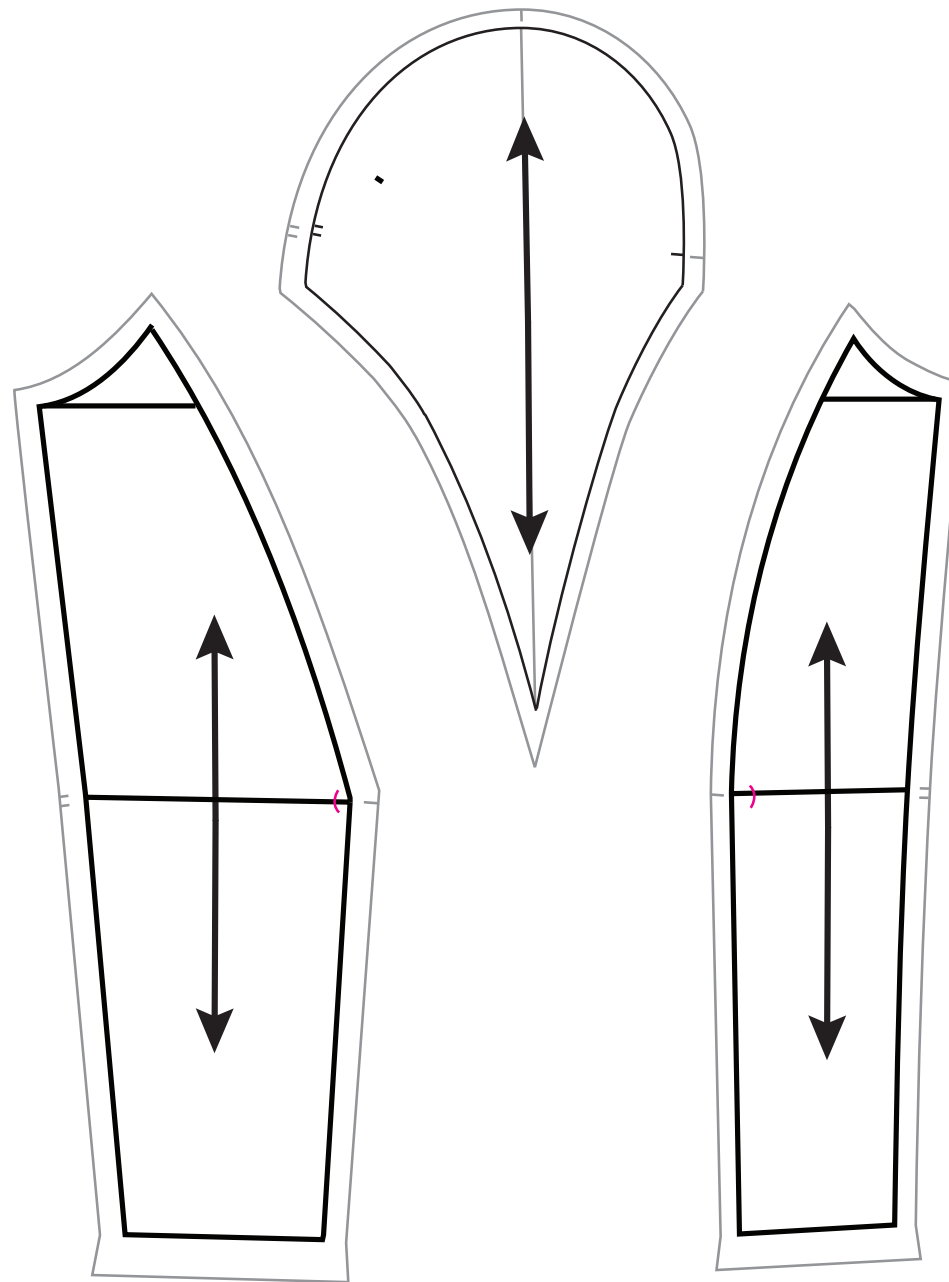


7. Notch the sleeve seam intersection
8. Draw a center line on a fresh piece of pattern paper.
9. Place the slashed center sleeve piece on the paper and spread evenly as shown, at least 2" from the center line

Spread at slash lines



10. Mark a point 1 1/2" (or more) above the original cap height and blend a new sleeve cap, using your curves.
11. Blend seamlines as needed.



12. True seamlines

13. Mark grainlines, as pictured

14. Add seam and hem allowances